



TROPICANA
GRANDHILL
GENTING HIGHLANDS



服务式公寓

永久产权
FREEHOLD



建筑外观
TwinPines facade

动静之间 心驰神往

大自然与大都会最美好的恩赐
全球度假与旅居胜地

Chillin' *in the Clouds*

**Layered & full of surprises,
a place for every shade of off-duty mood.**

The first residential development of
Tropicana Grandhill, with a full range
of leisure facilities and retail goodness.

A 云顶山顶景观恒温泳池 Heated Pool with Genting Highlands Views B 儿童游乐场 Children's Playground



A B





设施层平面图 FACILITIES LEVEL

- ① 活动草坪
- ② 恒温泳池
- ③ 浅池休憩区
- ④ 泳池甲板
- ⑤ 凉亭
- ⑥ 无障碍坡道
- ⑦ 户外淋浴
- ⑧ 花丛公园
- ⑨ 嬉水池
- ⑩ 按摩浴

- ⑪ 下沉式座椅
- ⑫ 高尔夫球轻击区
- ⑬ 儿童游乐场
- ⑭ 芬芳公园
- ⑮ 瑜伽冥想区
- ⑯ 足底按摩步道
- ⑰ 有盖行人道
- ⑱ 香草公园
- ⑲ 烧烤区
- ⑳ 有盖花棚
- ㉑ 观景台

- A 健身房
- B 瑜伽室
- C 儿童游乐室
- D 管理室
- E 前厅
- F 多功能礼堂
- G 烹饪厨房
- H 多媒体室
- I 游戏室

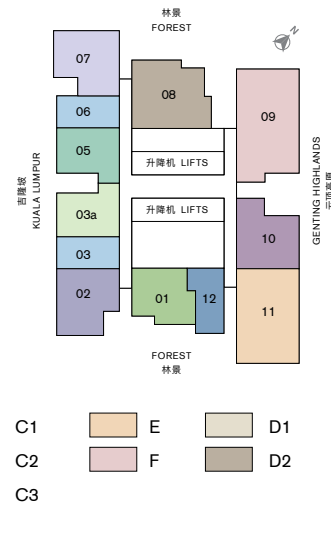
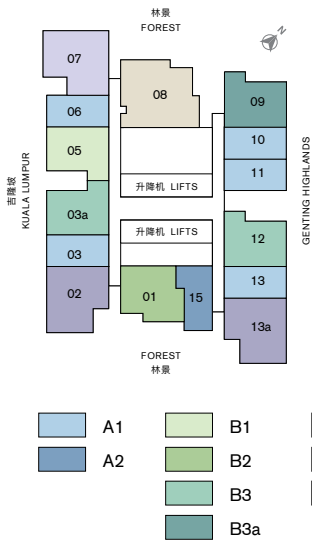
- ① Event Lawn
- ② Heated Swimming Pool
- ③ Shallow Lounge
- ④ Pool Terrace
- ⑤ Gazebo/Cabana
- ⑥ Disabled Ramp
- ⑦ Outdoor Shower
- ⑧ Blossom Garden
- ⑨ Wading Pool
- ⑩ Spring Jacuzzi

- ⑪ Sunken Seat
- ⑫ Putting Green
- ⑬ Children's Playground
- ⑭ Fragrant Garden
- ⑮ Retreat Space
- ⑯ Wellness Path/Reflexology
- ⑰ Covered Walkway
- ⑱ Herbs Garden
- ⑲ BBQ
- ⑳ Trellis with Shade
- ㉑ Viewing Terrace

- A Gymnasium
- B Yoga Studio
- C Children's Playroom
- D Management Office
- E Pre-Function
- F Multipurpose Hall
- G Gourmet Kitchen
- H Multimedia Room
- I Games Room

- A座 TOWER A -

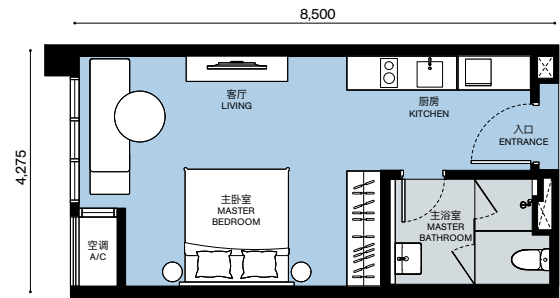
- B座 TOWER B -



建筑面积 BUILT-UP
(平方英尺/sf • 平方米/sm)

379 - 407 sf
35.2 - 37.8 sm

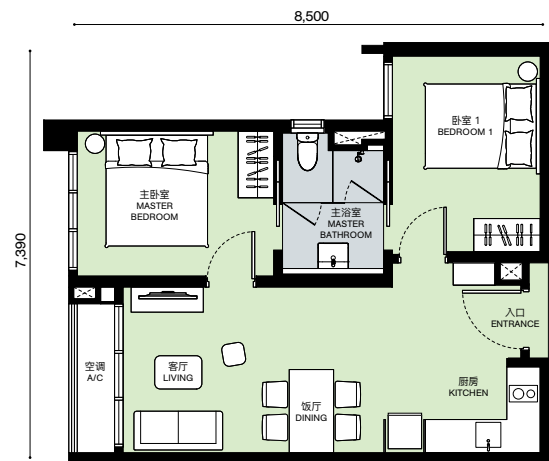
A1
套房 Studio



建筑面积 BUILT-UP
(平方英尺/sf • 平方米/sm)

564 - 580 sf
52.4 - 53.9 sm

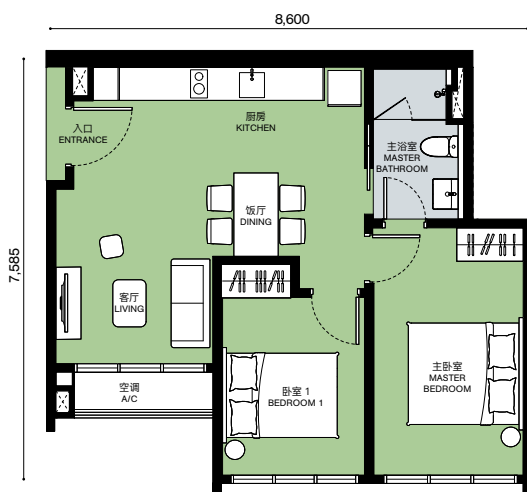
B1



建筑面积 BUILT-UP
(平方英尺/sf • 平方米/sm)

603 - 617 sf
56.0 - 57.3 sm

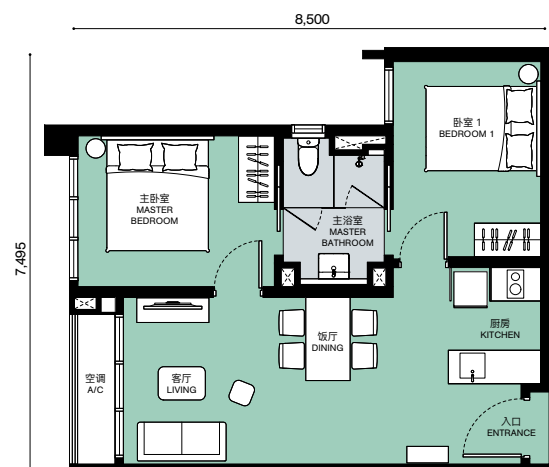
B2



建筑面积 BUILT-UP
(平方英尺/sf • 平方米/sm)

574 - 600 sf
53.3 - 55.7 sm

B3



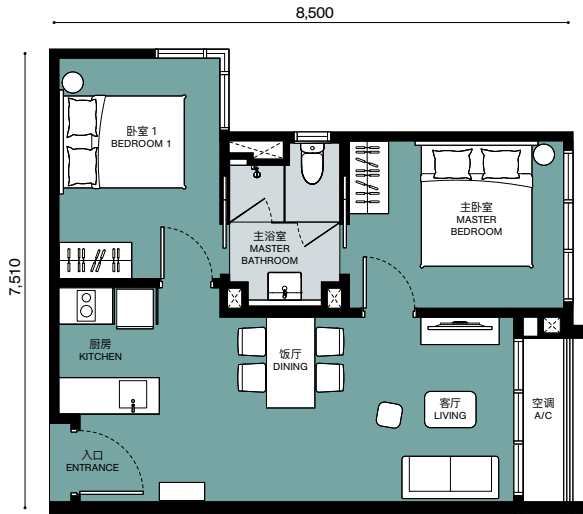
布局配置, 尺寸和面积因单位而异。如有要求, 发展商可提供任何单位的实际配置和测量结果计划副本。
The layout configuration, dimensions and area vary from unit to unit. A copy of the plan showing the actual configuration and measurements of any lot can be made available upon request.

B3a

2  1 

建筑面积 BUILT-UP
(平方英尺/sf • 平方米/sm)

575 - 586 sf
53.4 - 54.4 sm

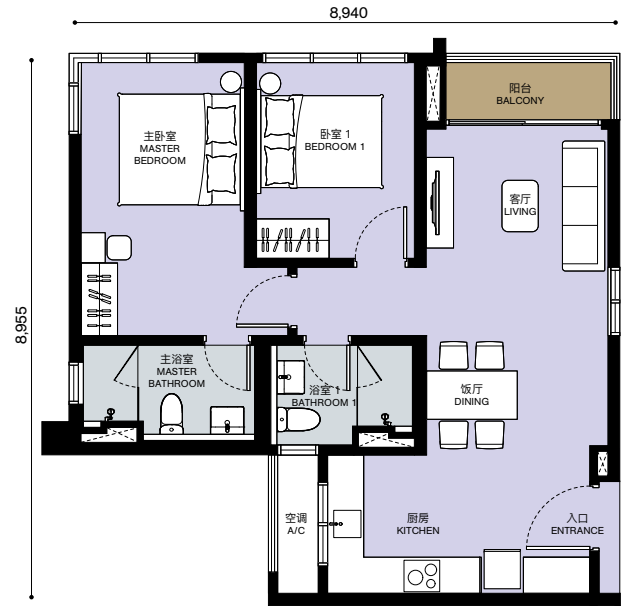


C1

2  2 

建筑面积 BUILT-UP
(平方英尺/sf • 平方米/sm)

751 - 753 sf
69.8 - 70.0 sm

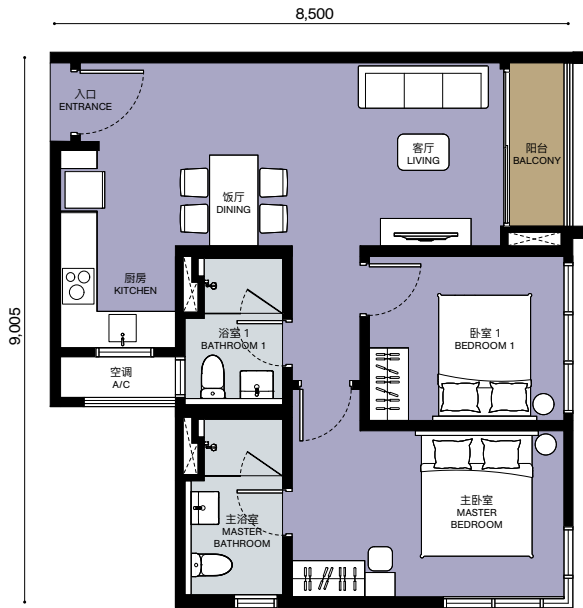


C2

2  2 

建筑面积 BUILT-UP
(平方英尺/sf • 平方米/sm)

731 - 746 sf
67.9 - 69.3 sm

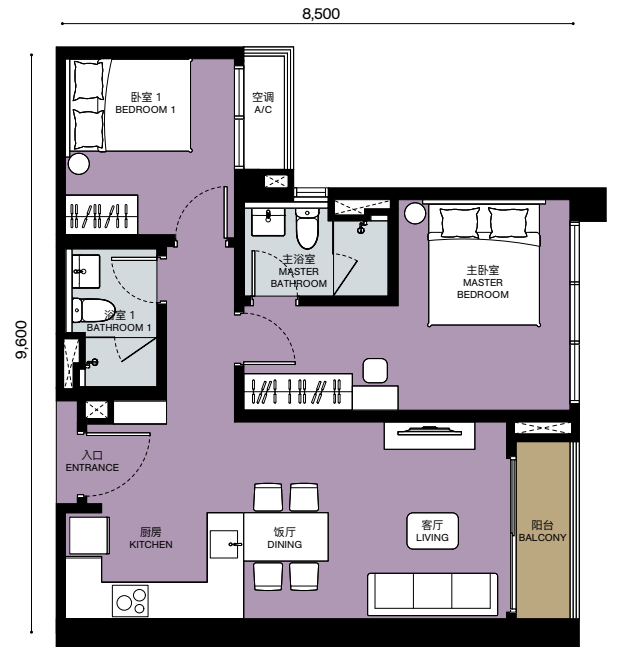


C3

2  2 

建筑面积 BUILT-UP
(平方英尺/sf • 平方米/sm)

739 - 756 sf
68.7 - 70.2 sm



D1

双钥匙 Dual Key

3  2 

建筑面积 BUILT-UP

(平方英尺/sf • 平方米/sm)

946 - 961 sf

87.9 - 89.3 sm



D2

双钥匙 Dual Key

3  2 

建筑面积 BUILT-UP

(平方英尺/sf • 平方米/sm)

954 - 968 sf

88.6 - 89.9 sm



E

双钥匙 Dual Key

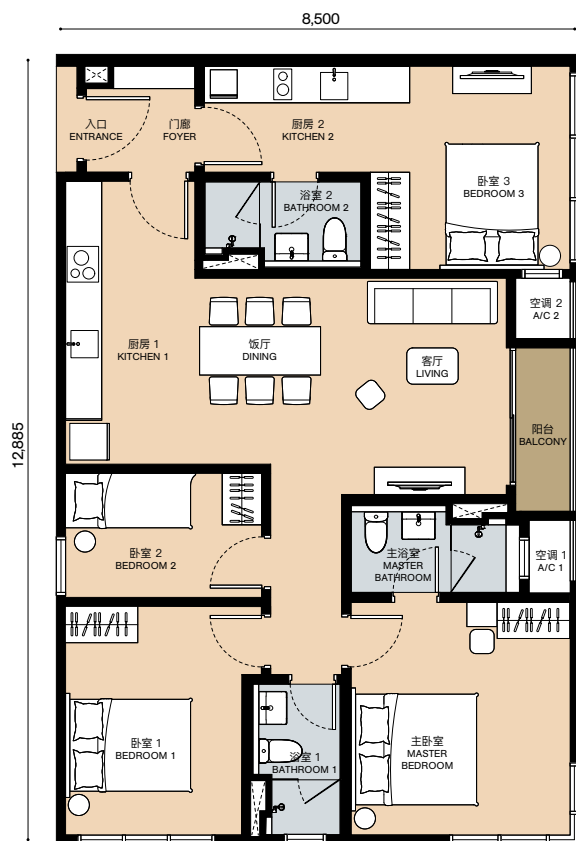
4  3 

建筑面积 BUILT-UP

(平方英尺/sf • 平方米/sm)

1,154 - 1,168 sf

107.2 - 108.5 sm



F

双钥匙 Dual Key

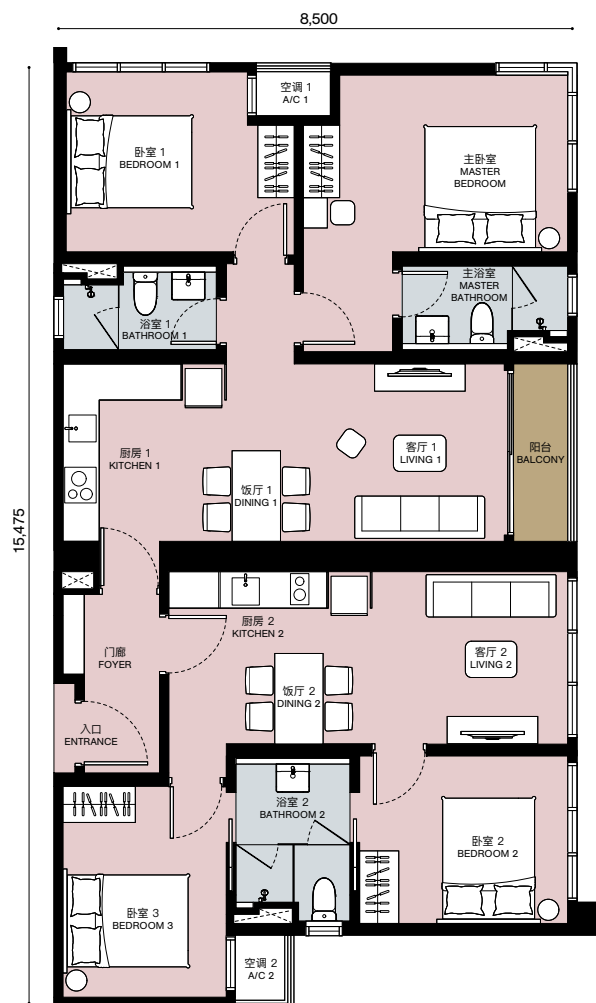
4  3 

建筑面积 BUILT-UP

(平方英尺/sf • 平方米/sm)

1,328 - 1,330 sf

123.4 - 123.6 sm



布局配置, 尺寸和面积因单位而异。如有要求, 发展商可提供任何单位的实际配置和测量结果计划副本。
The layout configuration, dimensions and area vary from unit to unit. A copy of the plan showing the actual configuration and measurements of any lot can be made available upon request.

一般规格

GENERAL SPECIFICATIONS

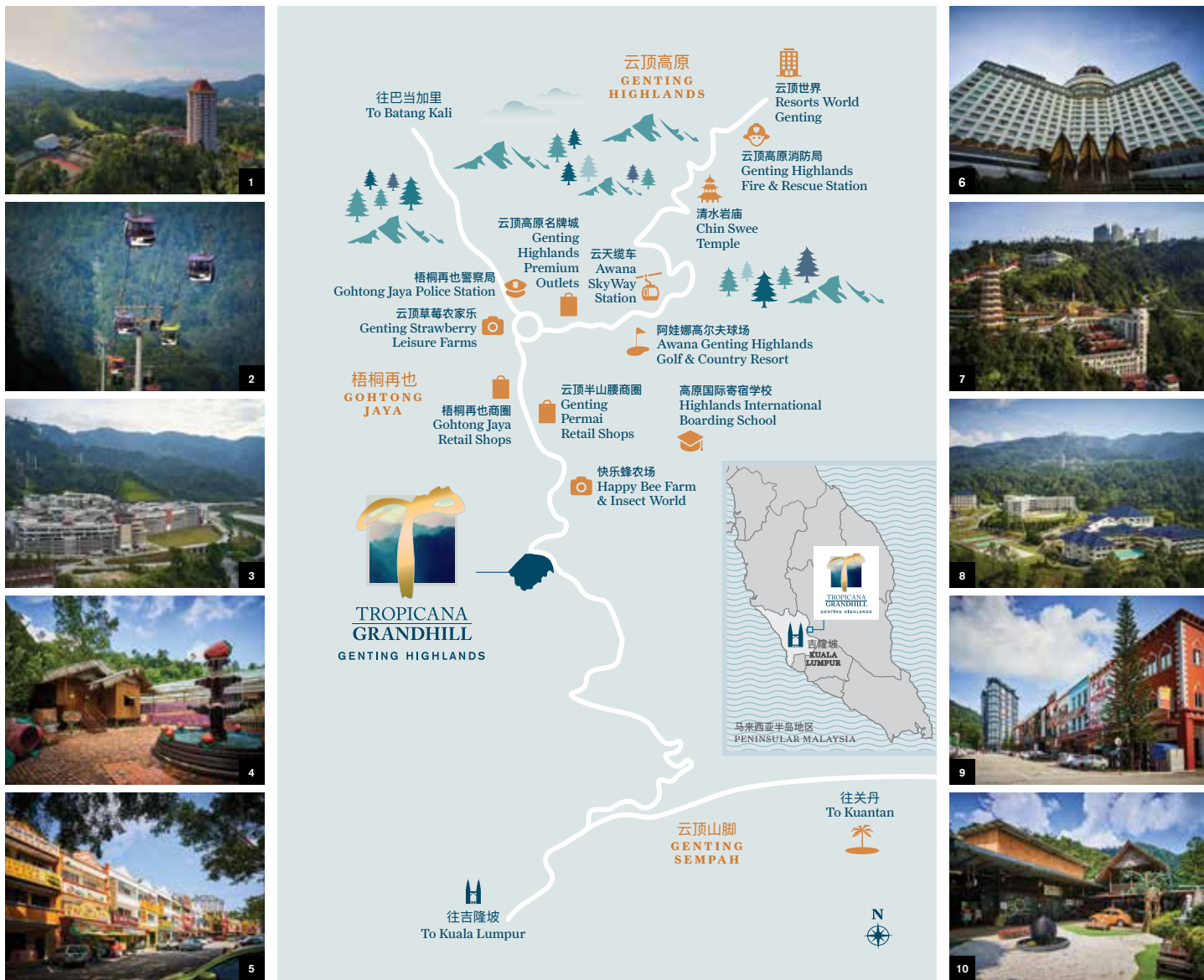
结构 Structure	钢筋混凝土 Reinforced Concrete												
屋顶覆盖物 Roof Covering	钢筋混凝土 Reinforced Concrete												
屋顶框架 Roof Framing	钢筋混凝土 Reinforced Concrete												
墙壁 Wall	钢筋混凝土/砖墙/干式墙 (如适用) Reinforced Concrete/Brickwall/Drywall (Where Applicable)												
窗 Window	铝框玻璃窗 Aluminium Framed Glass Window												
门 Doors	主要入口 Main Entrance	经核准防火门 Approved Fire Rated Timber Door											
	卧室/浴室/门廊 Bedroom/Bathroom/Foyer	平开木门 (如适用) Timber Flush Door (Where Applicable)											
	客厅 Living	铝框架玻璃推拉门 (如适用) Aluminium Frame Glass Sliding Door (Where Applicable)											
五金 Ironmongery	优质锁具 Quality Locksets												
天花板饰面 Ceiling Finishes	卧室/客厅/饭厅 Bedroom/Living/Dining	薄涂层/石膏天花板和油漆 (如适用) Skim Coat/Plaster Ceiling & Paint (Where Applicable)											
	阳台/空调壁架 Balcony/Aircond Ledge	薄涂层和油漆 (如适用) Skim Coat & Paint (Where Applicable)											
	厨房/浴室/门廊 Kitchen/Bathroom/Foyer	石膏天花板/油漆 (如适用) Plaster Ceiling/Paint (Where Applicable)											
地板饰面 Floor Finishes	卧室/客厅/厨房/饭厅/浴室/阳台/门廊 Bedroom/Living/Kitchen/Dining/Bathroom/Balcony/Foyer	瓷砖 (如适用) Porcelain Tiles (Where Applicable)											
	空调壁架 Aircond Ledge	水泥整平板 Cement Screed											
墙壁饰面 Wall Finishes	卧室/客厅/厨房/饭厅/阳台/门廊/空调壁架 Bedroom/Living/Kitchen/Dining/Balcony/Foyer/Aircond Ledge	薄涂层/石膏/油漆 (如适用) Skim Coat/Plaster/Paint (Where Applicable)											
	浴室 Bathroom	瓷砖 Porcelain Tiles											
房型 Type	A1	A2	B1	B2	B3	B3a	C1	C2	C3	D1	D2	E	F
卫浴和水管装置 Sanitary & Plumbing Finishes													
水槽水龙头 Sink Tap	1	1	1	1	1	1	1	1	1	2	2	2	2
洗手盆 Wash Basin	1	1	1	1	1	1	2	2	2	2	2	3	3
面盆龙头 Basin Tap	1	1	1	1	1	1	2	2	2	2	2	3	3
厨房水槽 Kitchen Sink	1	1	1	1	1	1	1	1	1	2	2	2	2
洗衣机水龙头 Washing Machine Tap	1	1	1	1	1	1	1	1	1	2	2	2	2
坐浴盆 Hand Bidet	1	1	1	1	1	1	2	2	2	2	2	3	3
手持花洒套装 Hand Shower Set	1	1	1	1	1	1	2	2	2	2	2	3	3
淋浴花洒套装 Rain Shower Set	-	-	-	-	-	-	1	1	1	1	1	1	1
电气安装 Electrical Installations													
电灯点 Lighting Point	7	8	12	13	13	13	18	18	17	21	21	26	30
13A 插座 13A Socket Outlet	12	12	14	14	14	14	14	14	14	23	24	24	26
13A 插座 + USB 接口 13A Socket Outlet + USB Outlet	2	2	3	3	3	3	3	3	3	4	4	5	6
20A 插座 20A Socket Outlet	2	2	2	2	2	2	2	2	2	4	4	4	4
风扇点 Fan Point	1	1	3	3	3	3	3	3	3	4	4	5	6
排气扇点 Exhaust Fan Point	1	1	-	1	-	-	-	-	1	1	1	1	-
热水器点 Water Heater Point	1	1	1	1	1	1	2	2	2	2	2	3	3
光纤壁式插座 Fibre Wall Socket	1	1	1	1	1	1	1	1	1	1	1	1	1
卫星电视点 SMATV Point	1	1	1	1	1	1	1	1	1	3	3	3	4
空调点 Aircond Point	1	1	3	3	3	3	3	3	3	4	4	5	6
门铃点 Door Bell Point	1	1	1	1	1	1	1	1	1	1	1	1	1
配电板 Electrical Distribution Board	1	1	1	1	1	1	1	1	1	1	1	1	1
电话点 Telephone Point	1	1	1	1	1	1	1	1	1	2	2	2	2

上等优势地

在游客居民络绎不绝的云顶高原里, 享受所有现代生活应有的便利和高品质的服务设施。丽阳云尚距离山顶仅二十分钟车程, 可及性相当高, 轻而易举就可到达各景点、教育机构、购物场所和医疗中心。

Coveted Location at Mid-Hill

Situated in the established township of Genting Highlands, Tropicana Grandhill is equipped with all the necessities and conveniences of modern life outside of its master plan. From schools, cultural destinations to shopping centres, Tropicana Grandhill is the starting point for a fulfilling time in Genting Highlands, with only 20 minutes' drive to the mountain's peak.



- | | | | | |
|------------|-----------|-----------|---|------------------------------------|
| 1 阿娃娜高尔夫球场 | 2 云天缆车 | 3 云顶高原名牌城 | 1 Awana Genting Highlands Golf & Country Resort | 2 Awana SkyWay Station |
| 4 云顶草莓农家乐 | 5 梧桐再也商圈 | 6 云顶世界 | 3 Genting Highlands Premium Outlets | 4 Genting Strawberry Leisure Farms |
| 8 高原国际寄宿学校 | 9 云顶半山腰商圈 | 10 快乐蜂农场 | 6 Resorts World Genting | 7 Chin Swee Temple |
| | | | 8 Highlands International Boarding School | 9 Genting Permai Retail Shops |
| | | | 10 Happy Bee Farm & Insect World | |



微信账号:
WECHAT ID:



018 390 9988
tropicanagrandhill.com
86 4000702326
tropicanachina.com

发展商
DEVELOPER
Tropicana Sierra Sdn. Bhd.
Unit 1301, Level 13,
Tropicana Gardens Office Tower
No. 2A, Persiaran Surian, Tropicana Indah
47810 Petaling Jaya, Selangor Darul Ehsan

丽阳云尚销售展示厅
TROPICANA GRANDHILL PROPERTY GALLERY
Jalan Permai 2, Genting Permai Avenue,
69000 Genting Highlands, Pahang.

A member of



此资料的内容有随时变更的可能, 并不构成正式的法律或合同效力, 所有的渲染效果图仅为本项目的初步设计。在该项目竣工前, 发展商有保留按建筑设计师或相关政府部门当局的指示或批准进行调整修改项目建筑物、发展规划或其项目的任一单元或部分的权利。尽管在准备此资料时发展商已采取了所有合理的措施, 但发展商不对任何需调整之处负责。The information herein is subject to change and cannot form an offer or contract, and all renderings are artist's impressions only. The Developer reserves the right to modify any part or parts of the building, development and/or any unit prior to completion as directed or approved by the architects and/or the relevant authorities. While every reasonable care has been taken in preparing this publication, the Developer cannot be held liable for any inaccuracies.

Developer: Tropicana Sierra Sdn. Bhd. (289863-A) • Developer's Address: Unit 1301, Level 13, Tropicana Gardens Office Tower, No. 2A, Persiaran Surian, Tropicana Indah, 47810 Petaling Jaya, Selangor Darul Ehsan. • Developer's License No.: 19893-1/03-2022/0199(L) • Validity: 03/03/2020 - 02/03/2022 • Advertising & Sale Permit License No.: 19893-1/03-2022/0199(P) • Validity: 03/03/2020 - 02/03/2022 • Approval Authority: Majlis Perbandaran Bentong • Building Plan Reference: MPB/JKB/GH/4/26/2019 • Expected Date of Completion: 60 Months from Date of SPA (March 2025) • Land Tenure: Freehold • Land Encumbrances: Nil • Type of Property: Serviced Apartment • Total Units: 1,443 Units; Block A: 795 Units; Block B: 648 Units • Selling Price: Block A RM477,000 (Min.) - RM1,154,000 (Max.); Block B RM593,000 (Min.) - RM1,954,000 (Max.) • Built-up Area: Block A 379 sf (Min.) - 961 sf (Max.); Block B 381 sf (Min.) - 1,330 sf (Max.) • 5% Bumiputera Discount • Express Condition: The Land cannot be transferred, leased, or charged except with the consent of the State Authority.

IKLAN INI TELAH DILULUSKAN OLEH JABATAN PERUMAHAN NEGARA