



**TROPICANA
METROPARK**

SUBANG JAYA

FREEHOLD

SOUTHPLACE

RESIDENCES

**A FRESHER
CONCEPT OF LIVING
IN SUBANG JAYA**

How green is
my valley
So flushed with life
So gentle in the wind
And every moment
is a song



A BRIGHT ARRIVAL
(ARTIST'S IMPRESSION ONLY)

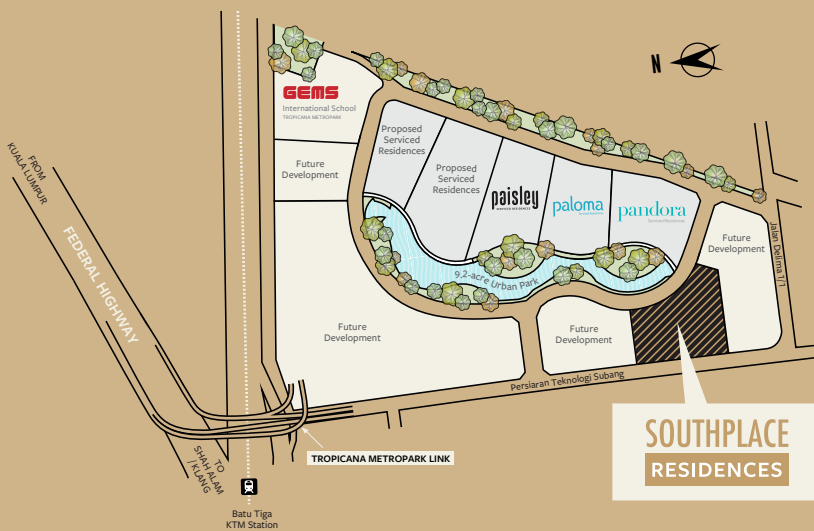


STUNNING VIEWS OF THE URBAN PARK
(ARTIST'S IMPRESSION ONLY)

JUMP START EVERYDAY

SOUTHPLACE RESIDENCES @ TROPICANA METROPARK IS THE HAPPIEST OF SUBANG JAYA'S HIGH RISE HOMES.

Introducing the new stylish serviced apartments of Tropicana Metropark—lifestyle-centric residences right above exciting neighbourhood shoppes, surrounded by spectacularly vibrant towns of Subang Jaya, Shah Alam and Glenmarie, with winning views of the urban park with a canal.



ESSENTIALS

1
STUDIOS AND TWO-BEDDERS

2
EXCLUSIVE FACILITIES AND LANDSCAPE DECK

3
DIRECTLY CONNECTED TO RETAIL, RESTAURANTS AND SERVICES BY ACCESS-CONTROL LIFTS

Let your home reflect the youthful you. From breezy design to bubbly vibes, SouthPlace Residences exemplifies colourful urban lives that stay fresh forever.



A BEAUTIFUL EVENING STROLL
(ARTIST'S IMPRESSION ONLY)

FREEHOLD ABOVE THE LATEST COMMERCIAL HUB COSY HOMES PARK VIEW



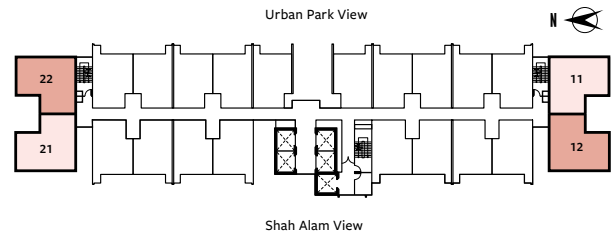
SHOPPES JUST AROUND THE CORNER
(ARTIST'S IMPRESSION ONLY)

TYPE A

2 Bedrooms

700 sf
65.1 sm

 A
 A-M



A STYLISH LIFESTYLE
(ARTIST'S IMPRESSION ONLY)

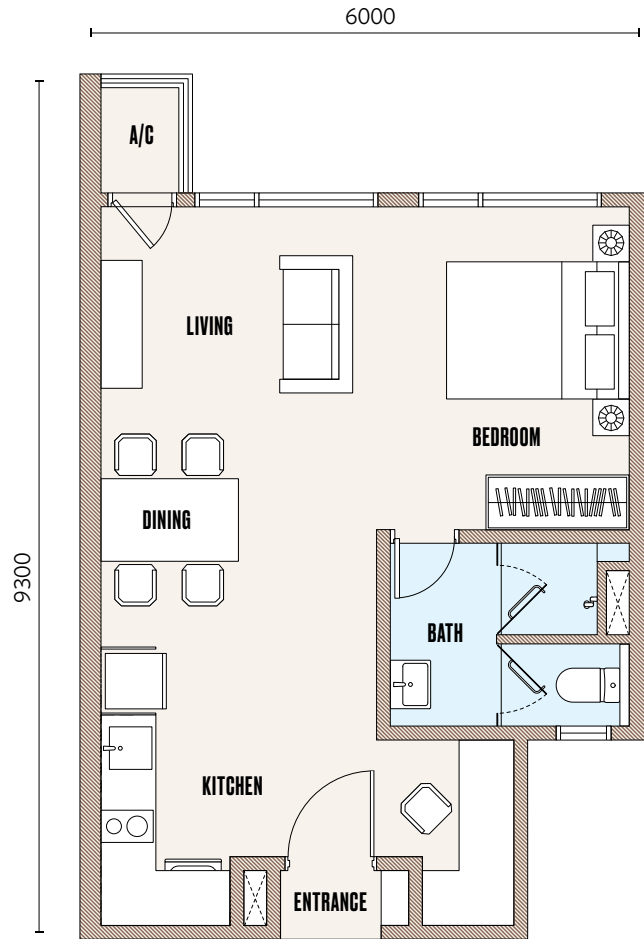
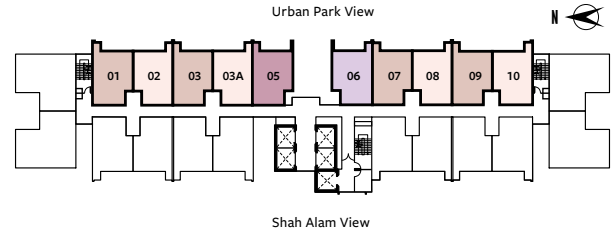
SPECIFICATIONS

TYPE B

Studio

500 sf
46.5 sm

- B
- B-M
- B1
- B1-M



STRUCTURE	Reinforced Concrete
WALL	Reinforced Concrete / Lightweight Block / Brick Wall
ROOF COVERING	Reinforced Concrete
WINDOWS	Aluminium Framed Glass Window
DOORS	MAIN ENTRANCE Approved Fire-Rated Door
	OTHERS Timber Flush Door
IRONMONGERY	Locksets
CEILING	Skim Coat & Paint / Plaster Ceiling

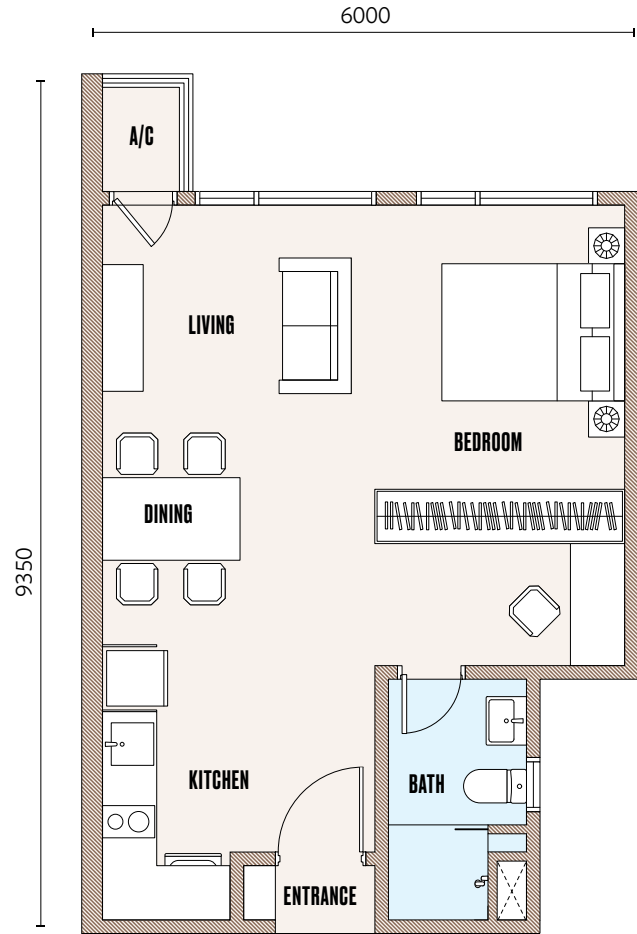
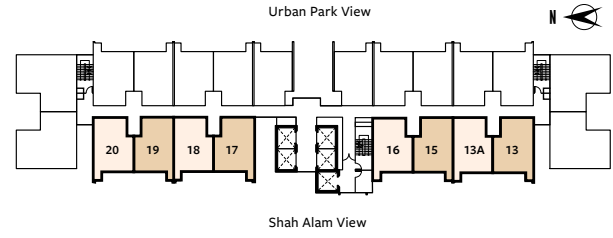
WALL FINISHES	BATHROOM	Tiles
	OTHERS	Skim Coat / Plaster & Paint
FLOOR FINISHES	LIVING / DINING / KITCHEN / BATHROOM / STUDY / YARD	Tiles
	A/C LEDGE	Cement Screed
	BEDROOM (ALL TYPE A)	Laminated Flooring
	BEDROOM (ALL TYPE B & C)	Tiles

TYPE C

Studio

500 sf
46.5 sm

C
 C-M



SANITARY WARE & PLUMBING FITTINGS

	A	B	C
WASH BASIN	2	1	1
BASIN TAP	2	1	1
WATER CLOSET	2	1	1
TOILET PAPER HOLDER	2	1	1
HAND BIDET	2	1	1
KITCHEN SINK WITH TAP	1	1	1
WASHING MACHINE TAP	1	1	1

ELECTRICAL INSTALLATIONS

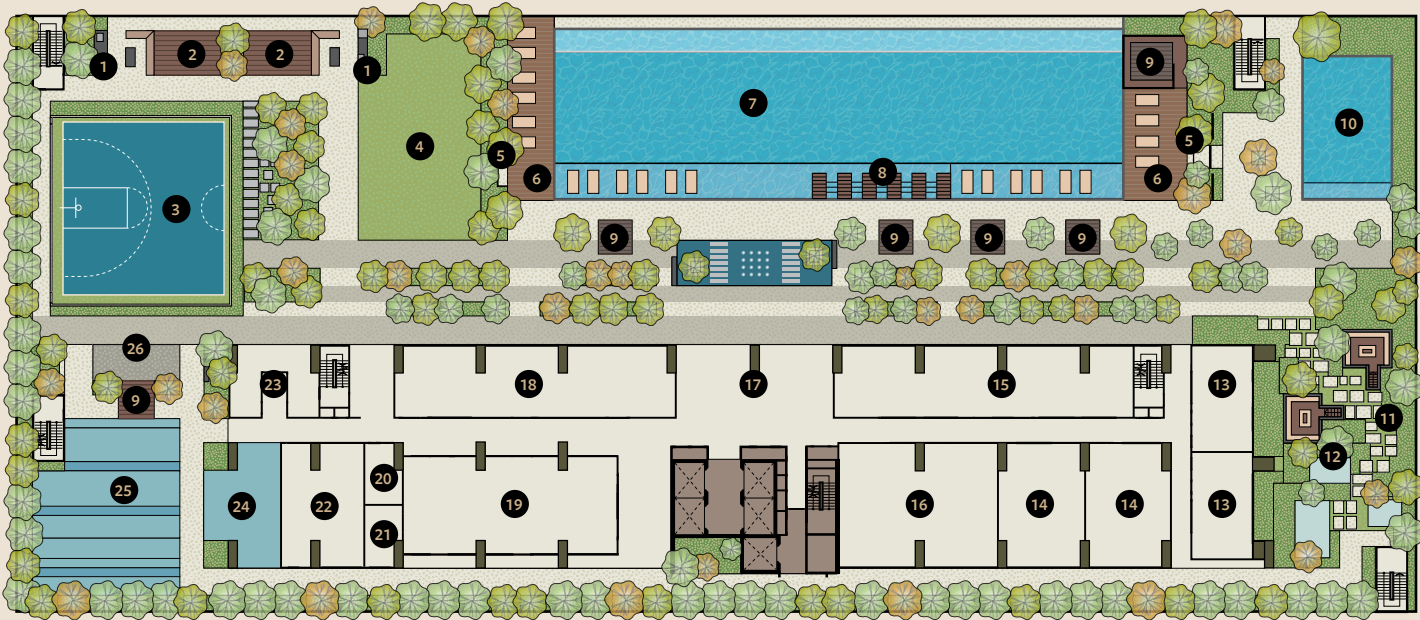
	A	B	C
LIGHTING POINT	15	11	10
CEILING FAN POINT	3	2	2
POWER POINT	15	13	13
AIR-CONDITIONING POINT	3	2	2
WATER HEATER POINT	2	1	1
TV POINT	1	1	1
FIBRE WALL SOCKET	1	1	1
DOOR BELL POINT	1	1	1



FACILITIES YOU'LL LOVE

AT L9
PODIUM

A RELAXING SWIM
(ARTIST'S IMPRESSION ONLY)



LEGEND

- | | | | |
|----|-----------------------|----|-------------------|
| 1 | BBQ Terrace | 14 | Surau |
| 2 | Gazebo | 15 | Gymnasium |
| 3 | Half Basketball Court | 16 | Management Office |
| 4 | Picnic Lawn | 17 | Lobby |
| 5 | Outdoor Shower | 18 | Lounge Space |
| 6 | Pool Deck | 19 | Multipurpose Hall |
| 7 | Swimming Pool | 20 | Laundry Room |
| 8 | Jacuzzi | 21 | Prep & Store Room |
| 9 | Cabana | 22 | Nursery |
| 10 | Kid's Pool | 23 | Washroom |
| 11 | Herbs Garden | 24 | Kid's Play Area |
| 12 | Par Course | 25 | Kid's Playground |
| 13 | Changing Room | 26 | Reflexology Path |



LOUNGING BY THE POOL
(ARTIST'S IMPRESSION ONLY)

A PART OF THE LIVELY SUBANG JAYA



1

88-acre

MASTERPLAN

residences, commercial, education, greenery



2

Purpose-built

DIRECT LINK

connecting Federal Highway to Tropicana Metropark



3

9.2-acre

URBAN PARK

airy spaces for modern fun 'n fitness



4

State-of-the-art

GEMS INTL SCHOOL

quality education for 3 to 18 year-olds



GO ANYWHERE ANYTIME

NEAR 6 MAJOR HIGHWAYS

A BUZZING HUB

SOUTHPACE RESIDENCES IS SITUATED RIGHT ABOVE SOUTHPLACE SHOPPES, THE LATEST HANGOUT SPOT OF SUBANG JAYA

THE CORE OF VIBRANCY

THE NEW MEETING POINT AT THE HEART OF SUBANG JAYA-SHAH ALAM-GLENMARIE GOLDEN TRIANGLE



1700 81 8887
012 533 1428

tropicanametropark.com.my

DEVELOPER
TROPICANA METROPARK SDN BHD
TROPICANA METROPARK PROPERTY GALLERY
No. 1, Jalan Delima 1/1, Subang Hi-Tech Industrial Park,
47500 Subang Jaya, Selangor, Malaysia.
GPS Coordinate: 3.069312 N, 101.564488 E
Operating hours: Open Daily, 10.00am-6.00pm

A member of



TROPICANA
CORPORATION BERHAD

The information herein is subject to change and cannot form an offer or contract, and all renderings are artist's impressions only. The Developer reserves the right to modify any part or parts of the building, development and/or any unit prior to completion as directed or approved by the architects and/or the relevant authorities. While every reasonable care has been taken in preparing this publication, the Developer cannot be held liable for any inaccuracies.

Tropicana Metropark Sdn Bhd (412231-X), Level 10-12, Tropicana City Office Tower, No. 3, Jalan SS20/27, 47400 Petaling Jaya, Selangor. • Developer's License No.: 12238-4/02-2022/0180(L) • Validity Period: 27/02/2020 - 26/02/2022 • Advertising & Sale Permit No.: 12238-4/02-2022/0180(P) • Validity Period: 27/02/2020 - 26/02/2022 • Approving Authority: Majlis Perbandaran Subang Jaya • Building Plan Reference No.: MPSJ.BGN.BP2.600-1/04/12/18) • Land Tenure: Freehold • Type of Development: Serviced Apartment • Land Encumbrances: OCBC Bank • Expected Completion Date: March 2024 • Total No. of Units: 656 • Built-up: 500sf - 700sf • Selling Price: RM377,000 (min) - RM852,000 (max) • 7% Bumiputera Discount • Express Condition: Nil.

IKLAN INI TELAH DILULUSKAN OLEH JABATAN PERUMAHAN NEGARA.