



# Talk OF THE TOWN



TROPICANA  
THE RESIDENCES  
KLCC





# SLEEKCHIC

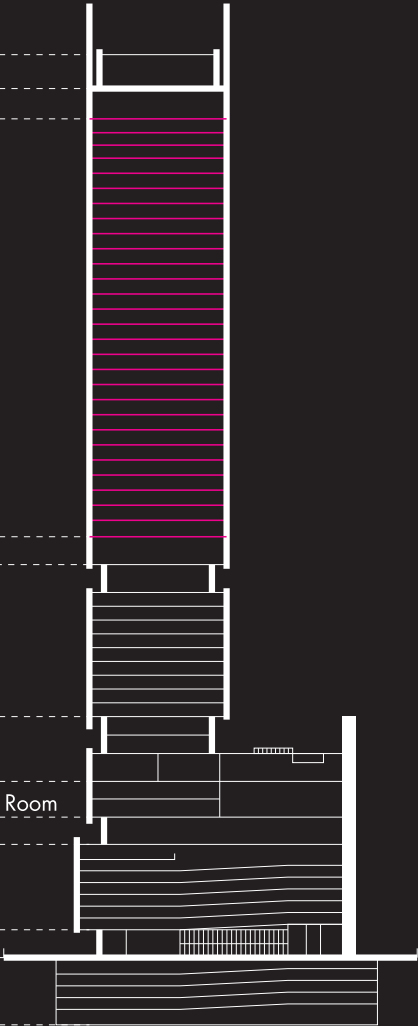
RISING MAJESTICALLY TO A SKYSCRAPING 55 FLOORS, TROPICANA THE RESIDENCES IS AN ELEGANT AND ICONIC COLUMN IN THE HEART OF KUALA LUMPUR'S CITY CENTRE. WITH AN INTERNATIONAL BRAND HOTEL ON THE LOWER FLOORS AND PURE, UNADULTERATED VIBRANCY ON THE UPPER LEVELS, *TROPICANA THE RESIDENCES* IS THE CENTRE OF ATTRACTION IN A HAPPENING METROPOLITAN CITY.





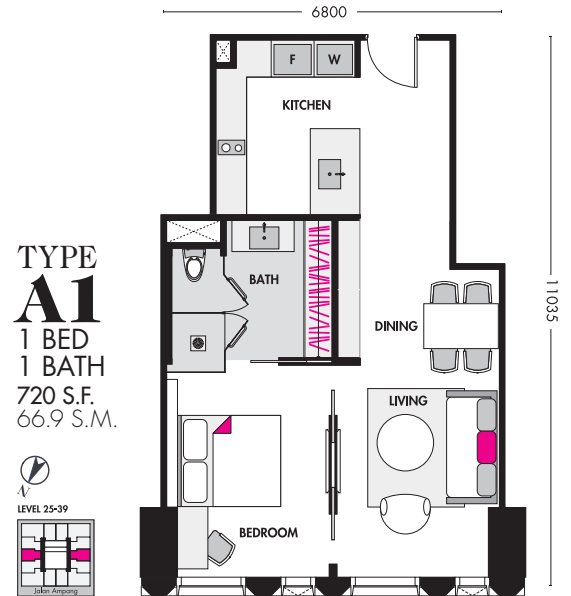
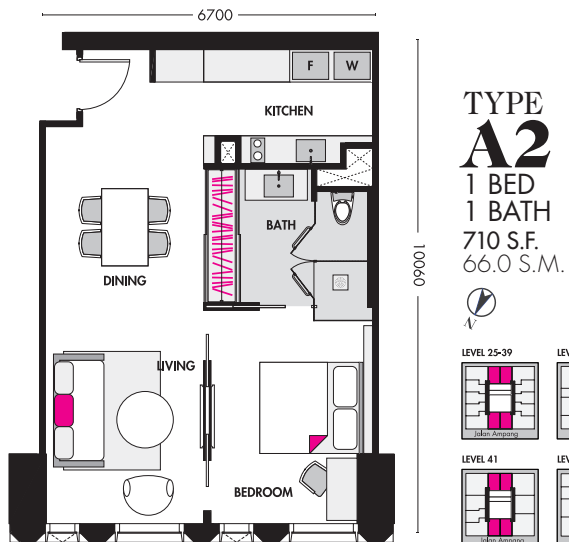
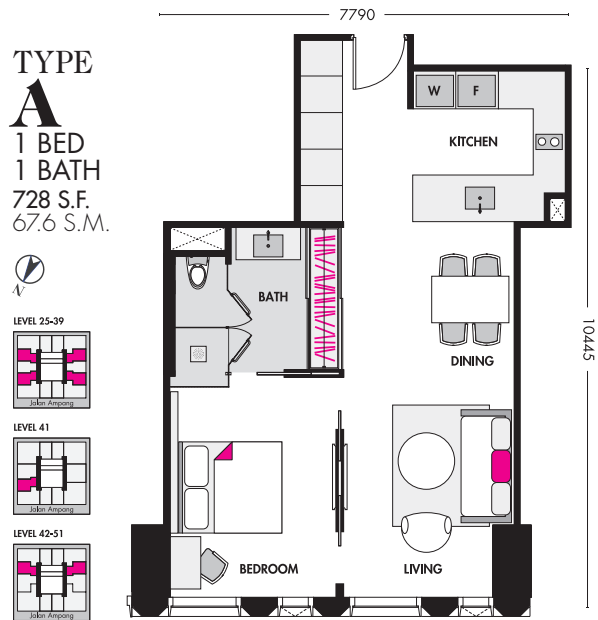
IN THE HUSTLE & BUSTLE OF KUALA LUMPUR CITY

- 54 - 55 Maintenance & Service Area
- 53 Serviced Residences Facilities
- 25 - 52 353 Serviced Residences
- 24 - 24M Maintenance & Service Area
- 14 - 23 150 W Hotel Rooms
- 11 - 13 W Hotel Facilities
- 9 - 10 W Hotel Grand Ballroom & Function Room
- 8 W Hotel Sky Lobby
- 1 - 7 Elevated Car Park
- Ground Lobby
- B1 - B4 Basement Car Park



ELEVATION PLAN





FURNISHED WITH IMPECCABLE TASTE



12585

**TYPE B**  
2 BED  
2 BATH  
1114 S.F.  
103.5 S.M.



LEVEL 25-39



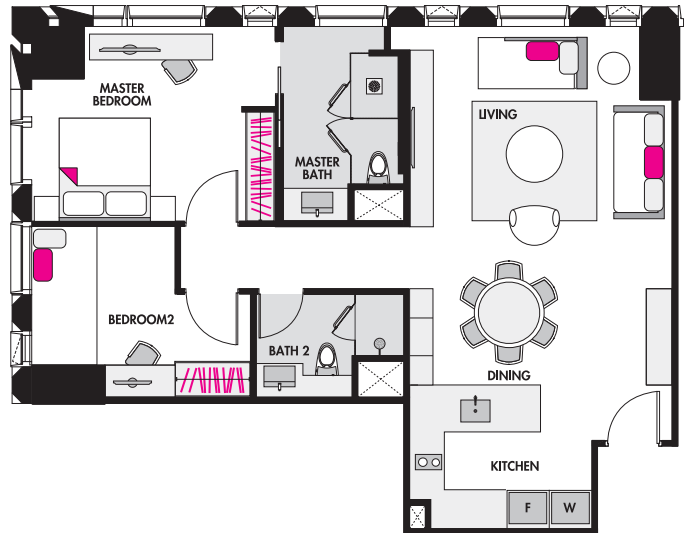
LEVEL 40



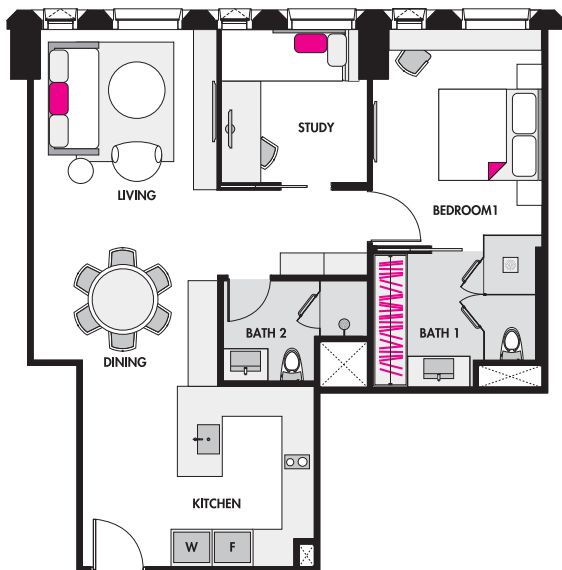
LEVEL 41



LEVEL 42-51



10340



11035

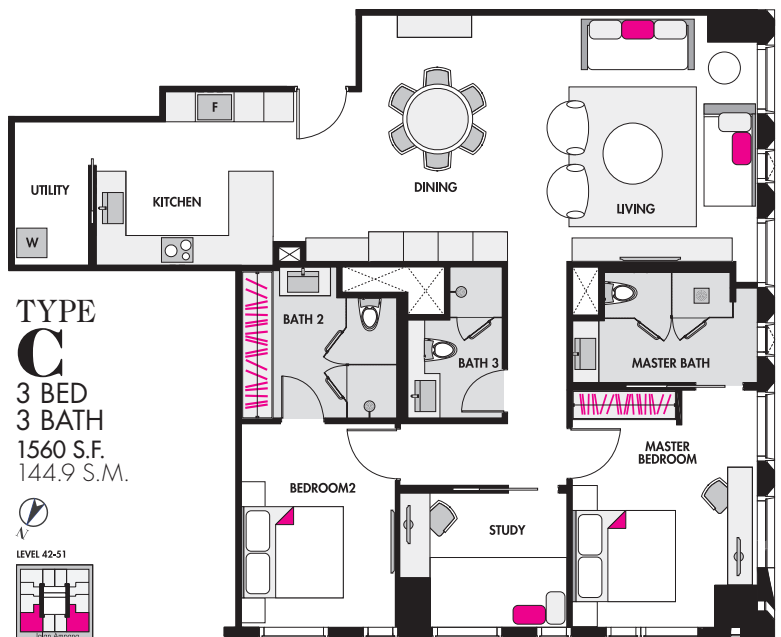
**TYPE B2**  
2 BED  
2 BATH  
1006 S.F.  
93.5 S.M.



LEVEL 42-51



15225



12555

**TYPE C**  
3 BED  
3 BATH  
1560 S.F.  
144.9 S.M.



LEVEL 42-51

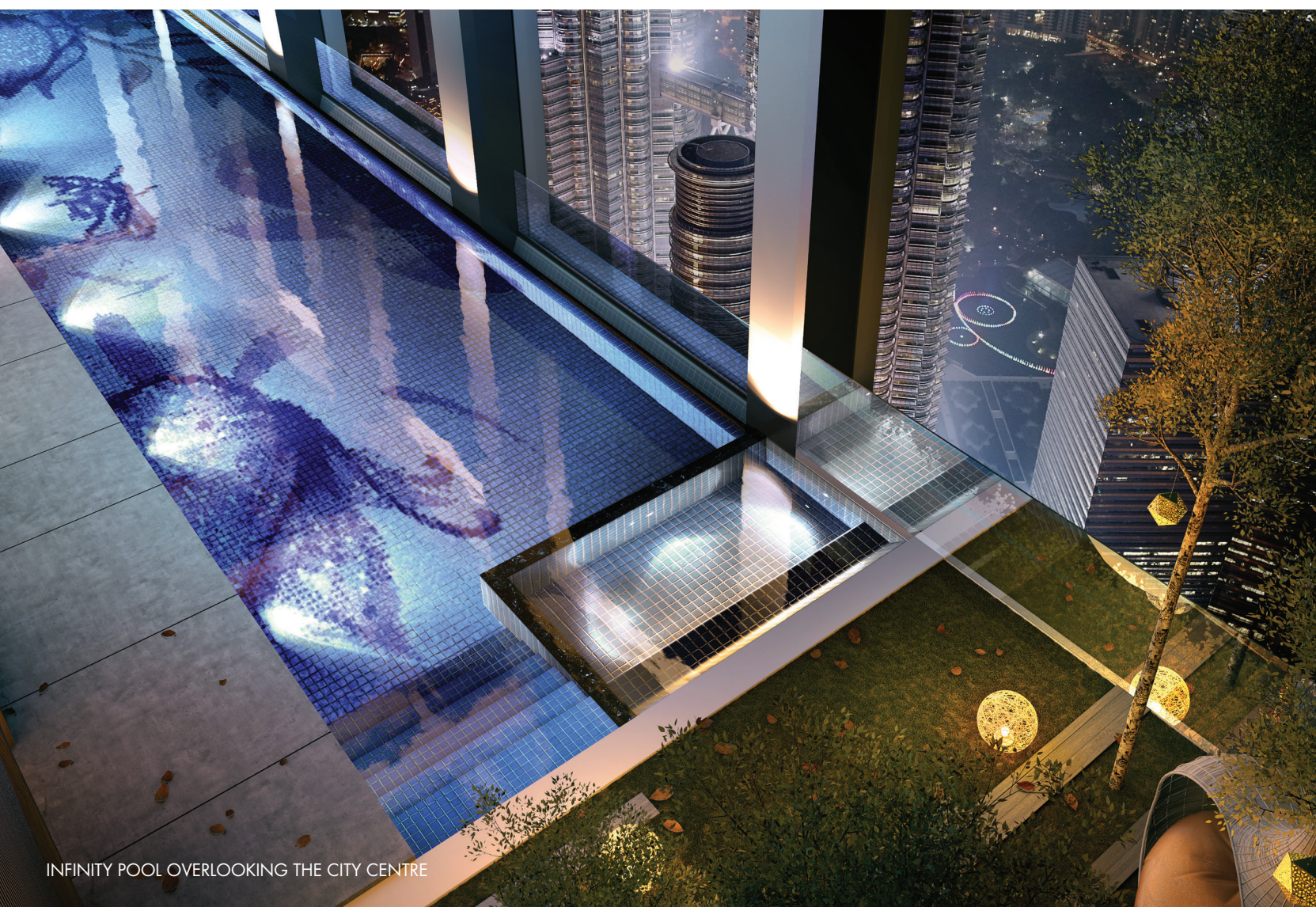






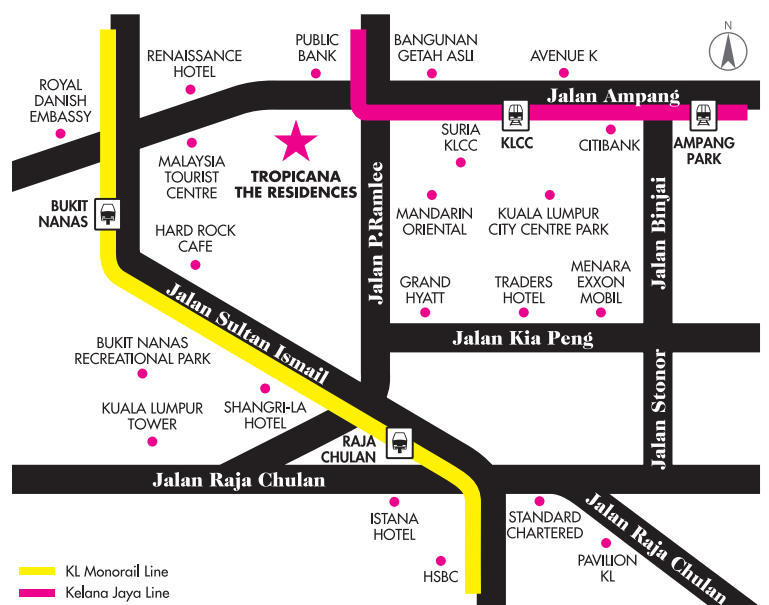
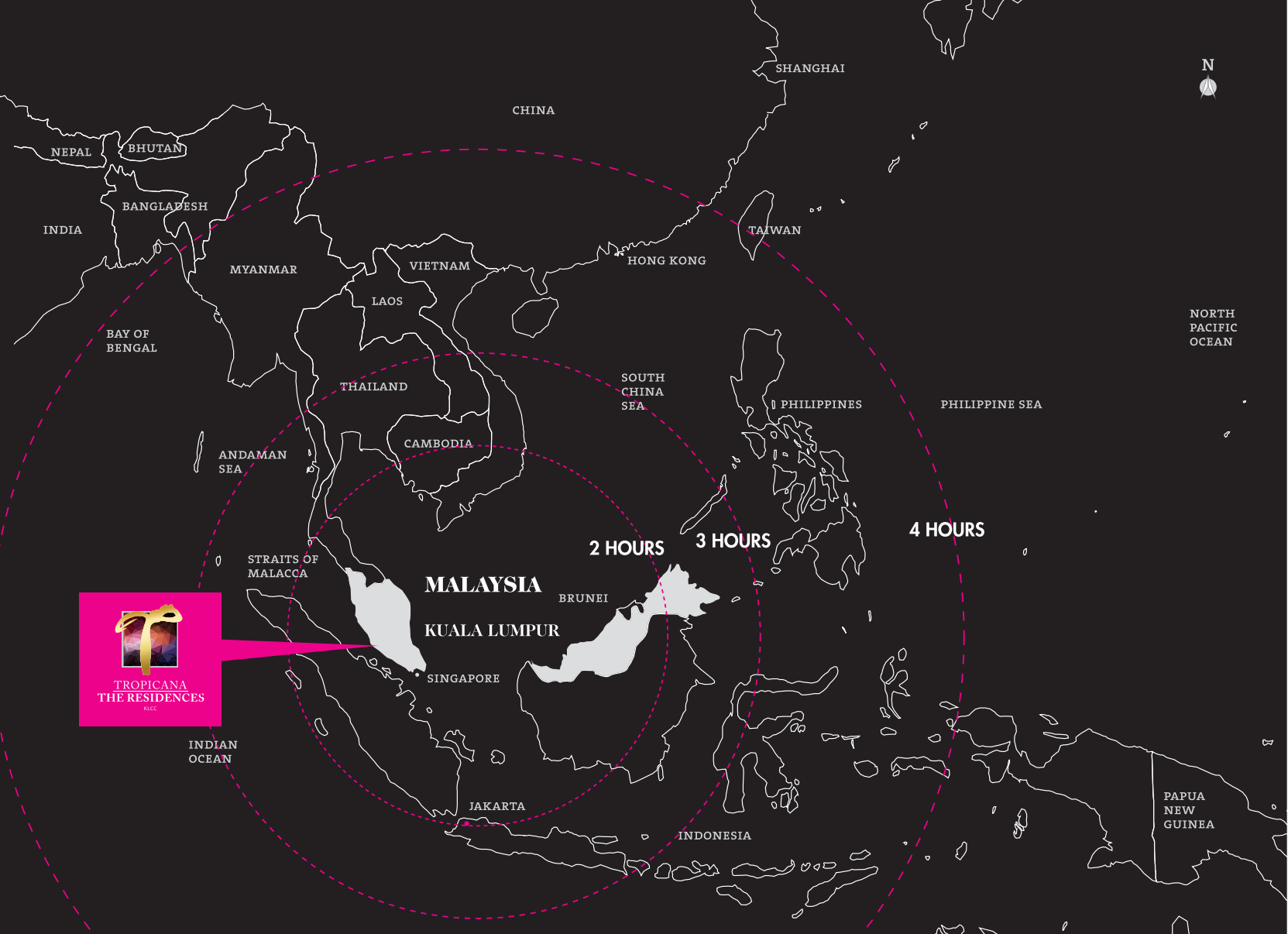
## THE ECSTASY LEVEL 53 FACILITIES PLAN

- 1** SALTWATER SKY POOL
- 2** JACUZZI
- 3** FOREST LOUNGE
- 4** CHILL OUT DECK
- 5** GOURMET LOFT
- 6** MISTY WALK
- 7** SPORTS BAR
- 8** YOGA ATHLETICA
- 9** SWEAT CLUB
- 10** SKY STREAM
- 11** AQUAROBICS ZONE
- 12** STEAM CUBE



INFINITY POOL OVERLOOKING THE CITY CENTRE





CHITS&

Tropicana The Residences reposes in the heart of Kuala Lumpur, next to the Petronas Twin Towers, arguably the most desired location in Malaysia. This prized locale, known as the golden triangle, is the financial and business heart of the country, and is densely populated by big brands both local and international.



# THE VOGUE PALETTE

## GENERAL SPECIFICATIONS

<b>Structure</b>	Reinforced Concrete
<b>Wall</b>	Masonry Wall, Drywall Panel
<b>Roof</b>	Reinforced Concrete Roof Slab
<b>Ceiling</b>	Skim Coat and Paint, Gypsum Board Ceiling
<b>Windows</b>	Aluminum Framed Window Panels And Façade Cladding System
<b>Entrance Door</b>	Approved Fire-Rated Timber Panel Door
<b>Others</b>	Timber Panel Door
<b>Ironmongery</b>	Quality Lock Sets
<b>Wall Finishes</b>	Skim Coat and Paint, Stone, Coloured Glass Tiles
<b>Floor Finishes</b>	Stone and Timber
<b>Gas Piping</b>	Not Applicable

Sanitary Fittings										
	A	A1	A2	B	B1	B2	B3	C	C1	
<b>Master Bath</b>										
Wash basin with tap	1	1	1	1	1	1	1	1	1	
Rain shower set with shower mixer	1	1	1	1	1	1	1	1	1	
Water closet	1	1	1	1	1	1	1	1	1	
Hand Bidet	1	1	1	1	1	1	1	1	1	
<b>Common Bath</b>										
Wash basin with tap	0	0	0	1	1	1	1	2	2	
Rain shower set with shower mixer	0	0	0	1	1	1	1	2	2	
Water closet	0	0	0	1	1	1	1	2	2	
Hand bidet	0	0	0	1	1	1	1	2	2	
<b>Kitchen</b>										
Kitchen sink with tap	1	1	1	1	1	1	1	1	1	
Electrical Installations										
	A	A1	A2	B	B1	B2	B3	C	C1	
Lighting point	16	18	15	23	24	23	26	30	30	
Ceiling fan point	2	2	2	3	3	3	4	4	4	
Exhaust fan point	1	1	1	2	2	2	2	3	3	
Door bell point	1	1	1	1	1	1	1	1	1	
13A power point	24	24	24	27	31	27	32	34	35	
15A power point	3	3	3	3	3	3	3	3	3	
Water heater point	2	2	2	3	3	3	3	4	4	
Air-cond point	2	2	2	3	3	3	4	4	4	
30A SPN power point	1	1	1	1	1	1	1	1	1	
Telephone/Data point	4	4	4	5	5	5	6	6	7	
SMATV point	2	2	2	2	3	2	3	3	3	
Panic Button	1	1	1	1	1	1	1	1	1	
Magnetic Door Contact	1	1	1	1	1	1	1	1	1	
Video Intercom	1	1	1	1	1	1	1	1	1	
Smoke Detector	1	1	1	1	1	1	1	1	1	
Siren Alarm	1	1	1	1	1	1	1	1	1	



**+603 2141 3188**  
**+601 8203 8888**  
**tropicanatheresidences.com**

Developer: **Tropicana Residences Sdn Bhd** 430431-D  
Level 10 - 12 Tropicana City Office Tower  
3 Jalan SS 20/27, 47400 PJ, Selangor, Malaysia  
t. +603 7710 1018 f. +603 7725 3035  
e. enquiry@tropicanacorp.com.my

Developer's License Number: 11888-1/12-2016/02658(I) Validity Period: 18/12/2015 – 17/12/2016 • Advertising & Sales Permit Number: 11888-1/12-2016/02658(P)  
• Validity Period: 18/12/2015 – 17/12/2016 • Approving Authority: Dewan Bandaraya Kuala Lumpur • Building Plan Reference Number: DBKL BP T3 OSC 2013 1571  
• Land Tenure: Freehold • Total Number of Units: 353 • Type of Property: Serviced Residences • Expected Completion Date: November 2018 • Built Up Area: 710SQFT(Min) – 2,973SQFT(Max) • Land Encumbrance: Affin Bank Berhad • Selling Price: RM2,011,800(Min) – RM7,934,800(Max) • Bumi Discount: 5%

All information contained herein (including specifications, plans measurements, renderings and illustrations) are subject to amendments, variations and modifications without notification as may be required by the relevant authorities, or developer's consultants and is not intended to form and cannot form part of an offer and contract. Whilst every reasonable care has been taken in preparing this information, the developer cannot be held liable for any variation or inaccuracy. All measurements, areas, layout, boundaries, plans, dimensions, distances and elevations including without limitation all locations and positions of walls, windows, doors, pillars and/or other fixtures as well as their specific detailing depicted in any text or plan or brochure or other marketing material are not an actual depiction of the measurements, areas, layout, boundaries, plans, dimensions, distances and elevations including without limitation all locations and positions of wall, windows, doors, pillars and/or other fixtures as well as their specific detailing of the properties offered for sale. Actual development may differ from that depicted or may not occur. Prospective purchasers and others are advised not to scale from any of drawings or plans contained in any text or plan or brochure or other marketing material.

A member of



**TROPICANA**  
CORPORATION BERHAD